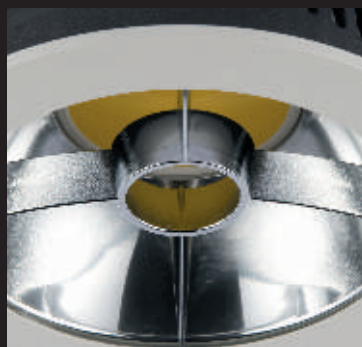
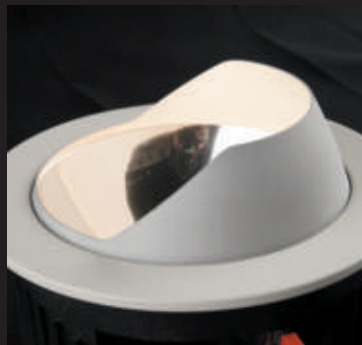
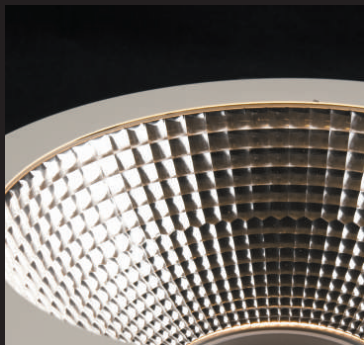


# HAMMER LED DOWNLIGHT

*Upgraders Energi*  
*Spar på energien - ikke lyset*

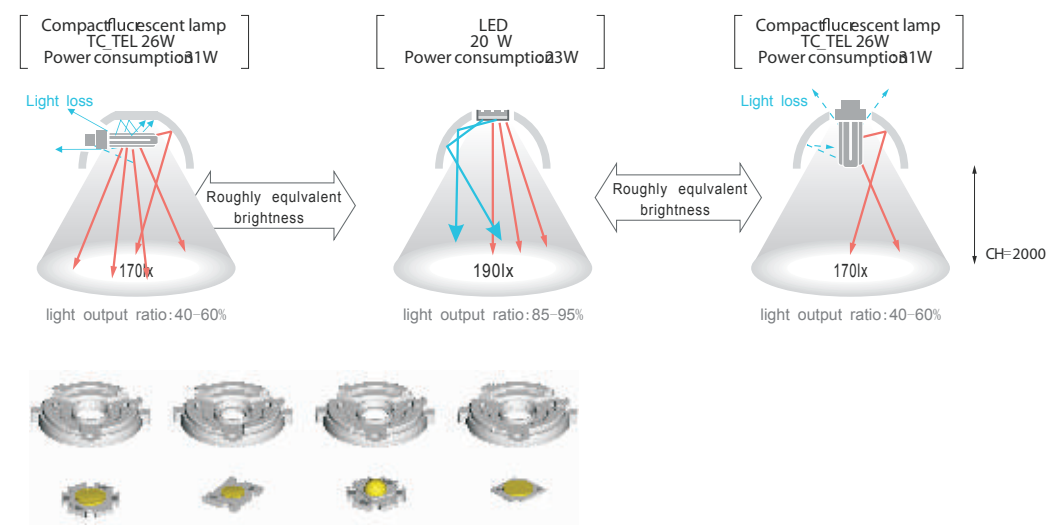




TEAMTRONIC's HAMMER series. Super compact design with the greatest and efficient passive cooling system. The high presser A360 Alloy one piece Aluminum casting body give super strong durability and positions that offers the greatest performance of heat dissipation. Hammer has an reflector systems for Narrow, Medium or flood and various accessories that made it passable to suit all kind if application of use. The LED's Long life and energy efficiency offer an significant advantages in terms of running costs. Hammer LED family are most ideal for Architectural and commercial use.

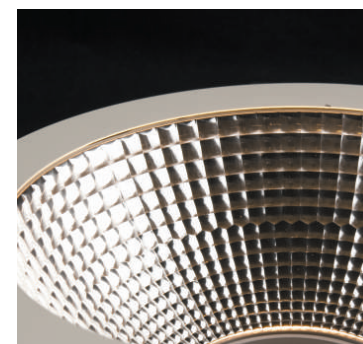
#### High efficiency light fixtures

Since the LED array models are made to install flat inside the reflector. It is deep enough to provide a large glare cutoff angle, the at the front, eliminating most of the loss of light that occurs with a conventional lamp where the light is reflected back into the lamp cause light lost. The excellent light output ratio of these light fixtures contributes to energy conservation. High-efficiency LED lighting fixtures deliver light almost



# Uppgraderas Energi

## Bæredygtige og rentable løsninger - til gavn for økonomien og miljøet



Dark light HAMMER reflector design with technology focusable with a light beam that is absolutely glare free by the human visual point. It's an top level of reflector technology that offer maximum visual comfort together with maximum light output.



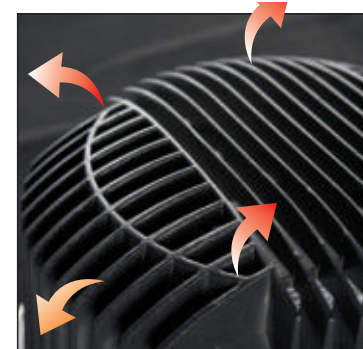
Wall Washer Hood TEAMTRONIC Adjustable Wall Washer Hood offers great wall washing effect that can be adjusted any angle to suit your application. Best of all, the wall washer hood cuts the glare and giving total anti-glare control.



Mounting spring system an integrated clip on the fixture enables secure, one-touch installation, eliminating the Need of tighten screws. Best of all the process requires no additional parts. So you don't need to worry about losing anchors or clips.



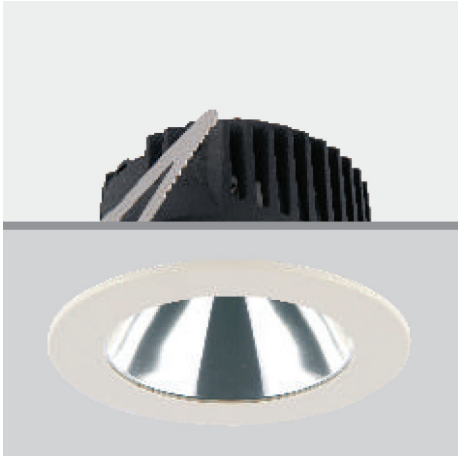
Cross Turbo Louvre TEAMTRONIC's Cross Turbo Louvre give you maximum visual comfort and the installation procedure requires no tools at all. So you do not need to High-efficiency light fixtures worry about finding no tools or screw driver.



TEAMTRONIC's Double-wall construction serves as a cooling system is designed to dissipate heat from LED, also providing maximum Air flow from the entire operation caused by rising hot air. When the operation temperature has been minimized, and the LED are guaranteed for its maximum life time.

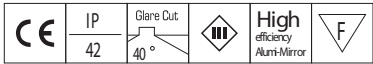
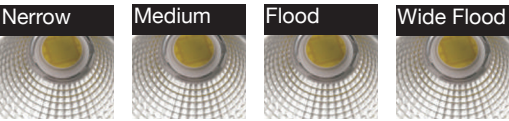






## HAMMER 120MM

Trim: Die-cast aluminium  
Body: Die-cast aluminium  
Housing: 1.2mm Steel-matt black paint  
Safety Cover: PMMA Plate  
Reflector: 99.98%pure anodised aluminium  
Weight: 0.28 kg



LUMINAIRE CODE	Watt/lm	COLOUR	LED	DRIVER
HAMMER-X-120-16	16 / 1365		CLL030	PLD-16-350
HAMMER-X-120-25	27 / 2097		CLL030	PLD-25-700
HAMMER-X-120-40	43 / 2980		CLL030	PLD-40-1050
HAMMER-X-120-60	64 / 4670		CLL030	PLD-60-1400

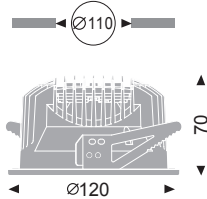
\*Standard 3000Kelvin colorindex >80% (3000kelvin colorindex >90 -12%lm output)

Recessed

### How to specify:

A recessed LED lamp 120mm diameter x 70mm deep downlight with a ceiling cut out of 110mm, manufactured from flame retardant moulded dark grey polycarbonate. Complete with LED driver control gear to operate LED lamps wired to a 3 pole loop in/out push wire terminal block. Supplied with unique tri-wing arms suitable for fixing into ceilings with a thickness of 1-40mm. Complete with a die-cast bezel finished RAL9010 25% gloss and faceted mirror reflector and 3000K LED lamp. All made from halogen free materials (LSOH).

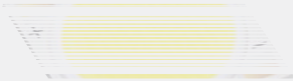
As Teamtronix hammer range.



## Heat Dissipation Design

CITILED®  
The Light Engine

## CLL030 Series

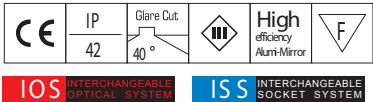
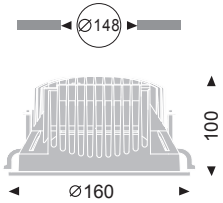
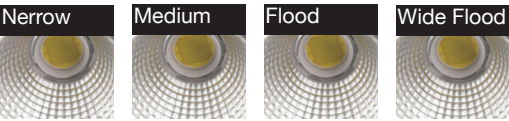


Heat dissipation design is a precondition in order to maximize the performance of the LED. In this document, the data that is deemed necessary in the detailed heat dissipation structure of the products and the heat dissipation design of the lighting apparatus is provided as a reference for the appropriate thermal design.



HAMMER 160MM

Trim: Die-cast aluminium  
Body: Die-cast aluminium  
Housing: 1.2mm Steel-matt black paint  
Safety Cover: PMMA Plate  
Reflector: 99.98%pure anodised aluminium  
Weight: 0.28 kg



LUMINAIRE CODE	Watt/lm	COLOUR	LED	DRIVER
HAMMER-X-160-16	16 / 1365	<div><div></div><div></div><div></div></div>	CLL030	PLD-16-350
HAMMER-X-160-25	27 / 2097	<div><div></div><div></div><div></div></div>	CLL030	PLD-25-700
HAMMER-X-160-40	43 / 2980	<div><div></div><div></div><div></div></div>	CLL030	PLD-40-1050
HAMMER-X-160-60	64 / 4670	<div><div></div><div></div><div></div></div>	CLL030	PLD-60-1400

\*Standard 3000Kelvin colorindex >80% (3000kelvin colorindex >90 -12%lm output)

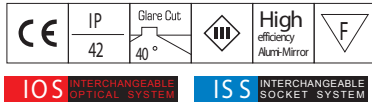
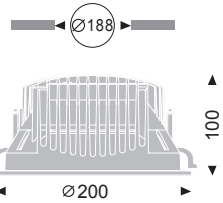
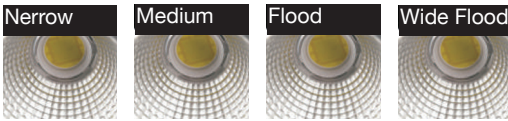
 Recessed

How to specify:  
A recessed LED lamp 160mm diameter x 100mm deep downlight with a ceiling cut out of 146mm, manufactured from flame retardant moulded dark grey polycarbonate. Complete with LED driver control gear to operate LED lamps wired to a 3 pole loop in/out push wire terminal block. Supplied with unique tri-wing arms suitable for fixing into ceilings with a thickness of 1-40mm. Complete with a die-cast bezel finished RAL9010 25% gloss and faceted mirror reflector and 3000K LED lamp. All made from halogen free materials (LSOH).  
As Teamtronix hammer range.



HAMMER 200MM

Trim: Die-cast aluminium  
Body: Die-cast aluminium  
Housing: 1.2mm Steel-matt black paint  
Safety Cover: PMMA Plate  
Reflector: 99.98%pure anodised aluminium  
Weight: 0.28 kg



LUMINAIRE CODE	Watt/lm	COLOUR	LED	DRIVER
HAMMER-X-200-16	16 / 1365	<div><div></div><div></div><div></div></div>	CLL030	PLD-16-350
HAMMER-X-200-25	27 / 2097	<div><div></div><div></div><div></div></div>	CLL030	PLD-25-700
HAMMER-X-200-40	43 / 2980	<div><div></div><div></div><div></div></div>	CLL030	PLD-40-1050
HAMMER-X-200-60	64 / 4670	<div><div></div><div></div><div></div></div>	CLL030	PLD-60-1400

\*Standard 3000Kelvin colorindex >80% (3000kelvin colorindex >90 -12%lm output)

 Recessed

How to specify:  
A recessed LED lamp 200mm diameter x 100mm deep downlight with a ceiling cut out of 186mm, manufactured from flame retardant moulded dark grey polycarbonate. Complete with LED driver control gear to operate LED lamps wired to a 3 pole loop in/out push wire terminal block. Supplied with unique tri-wing arms suitable for fixing into ceilings with a thickness of 1-40mm. Complete with a die-cast bezel finished RAL9010 25% gloss and faceted mirror reflector and 3000K LED lamp. All made from halogen free materials (LSOH).  
As Teamtronix hammer range.







*Upgraders Energi*

Skårup Vestergade 47  
DK-5881 Skårup, Fyn

+45 7023 1939

[www.energireduktion.dk](http://www.energireduktion.dk)

[kontakt@energireduktion.dk](mailto:kontakt@energireduktion.dk)

