



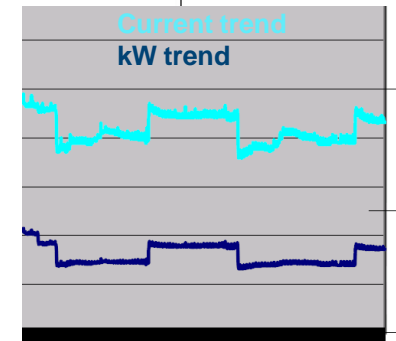
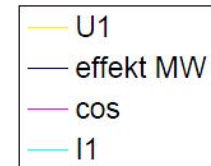
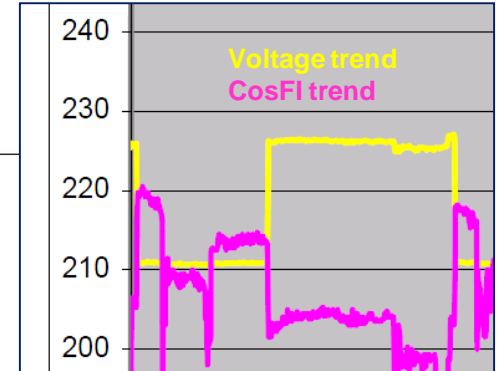
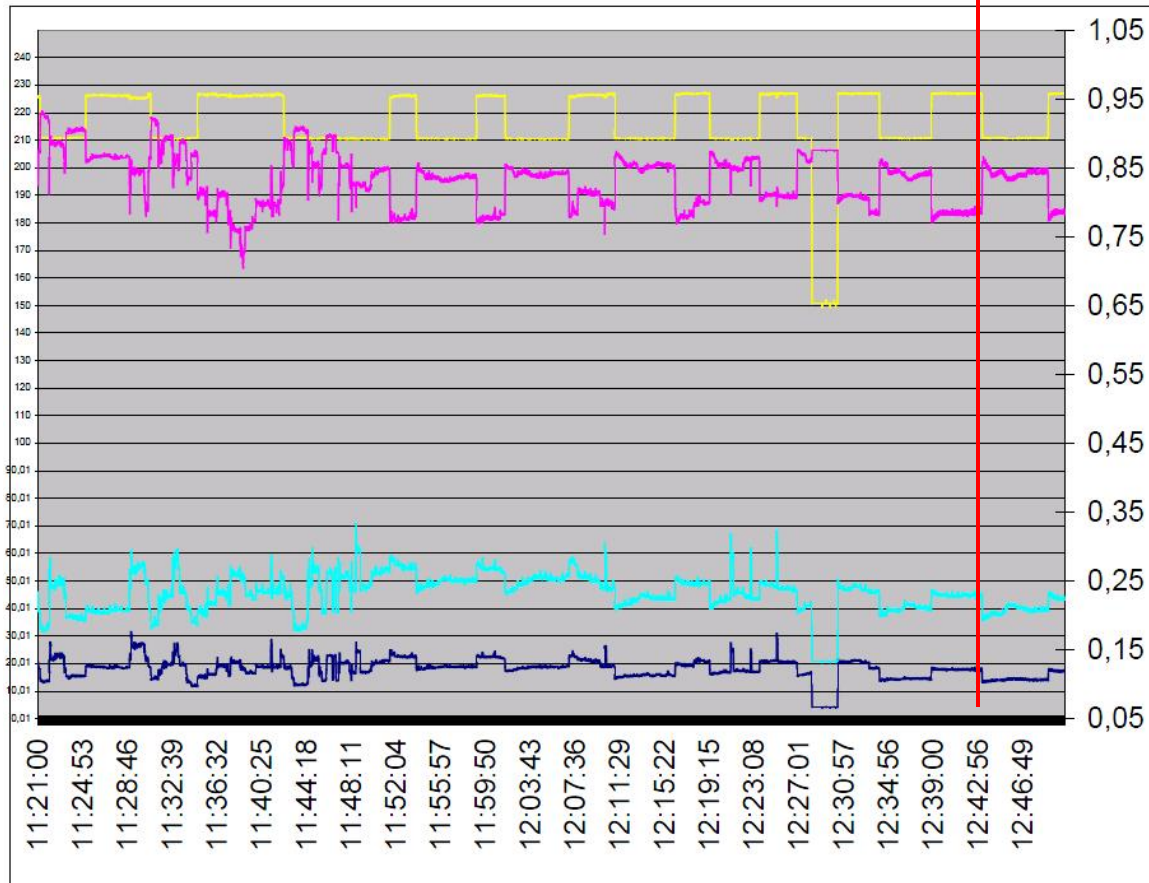
Kristoffer Bech, Power Quality DKABB, 7/3 2011

# Power Quality Energy Optimization

# PCS100 AVC

„Copenhagen Airport“

AVC turned on  
Lowering F-N voltage from 226V to 212V  
kW consumption reduced by 10%



# PCS100 AVC

„Danish railways - DSB“

To obtain energy savings DSB has installed an ABB PCS100 AVC (Active Voltage Conditioner)

The AVC is installed at a main-panel location in a large service building, where trains are being serviced.

The loads is a mix of Lights, Motors and other loads



PCS100 AVC location

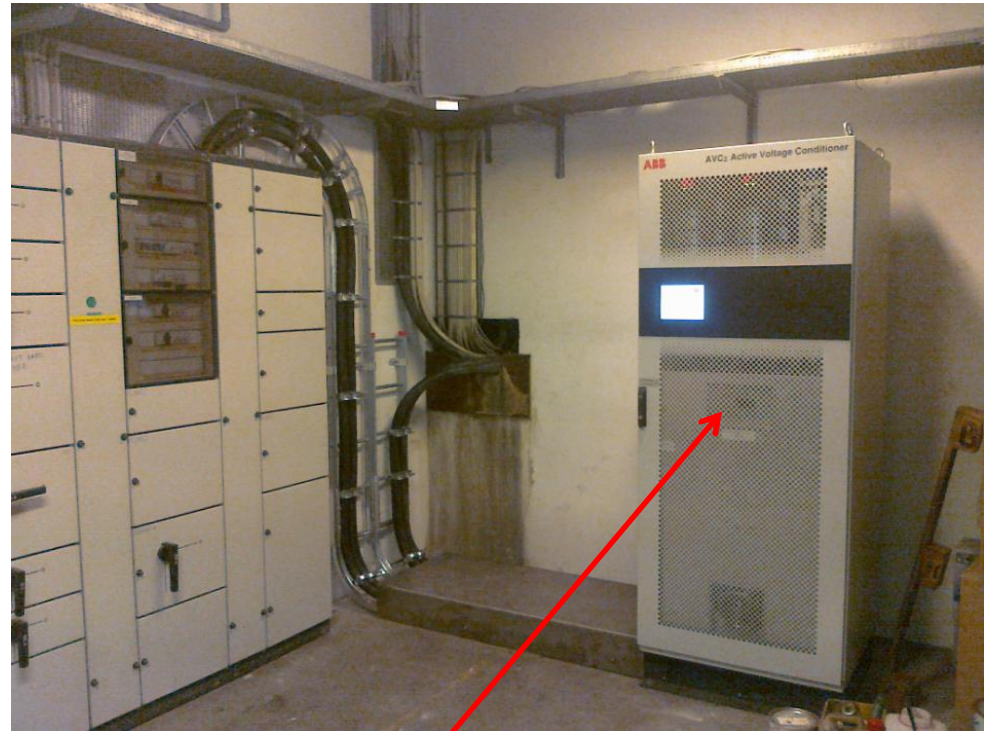
# PCS100 AVC

- „Danish railways - DSB“

To obtain energy savings DSB has installed an ABB PCS100 AVC (Active Voltage Conditioner)

The AVC is installed at a main-panel location in a large service building, where trains are being serviced.

The loads is a mix of Lights, Motors and other loads



PCS100 AVC location

# PCS100 AVC

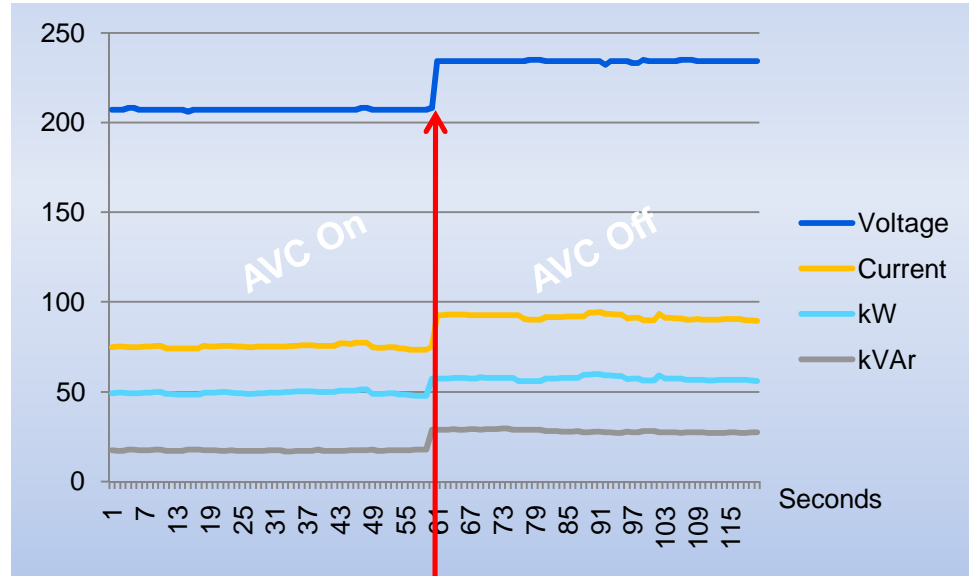
- „Danish railways - DSB“

Voltage reduction from 234V to 207V

Current is reduced by 18%

kW is reduced by 14%

kVAr is reduced by 37%



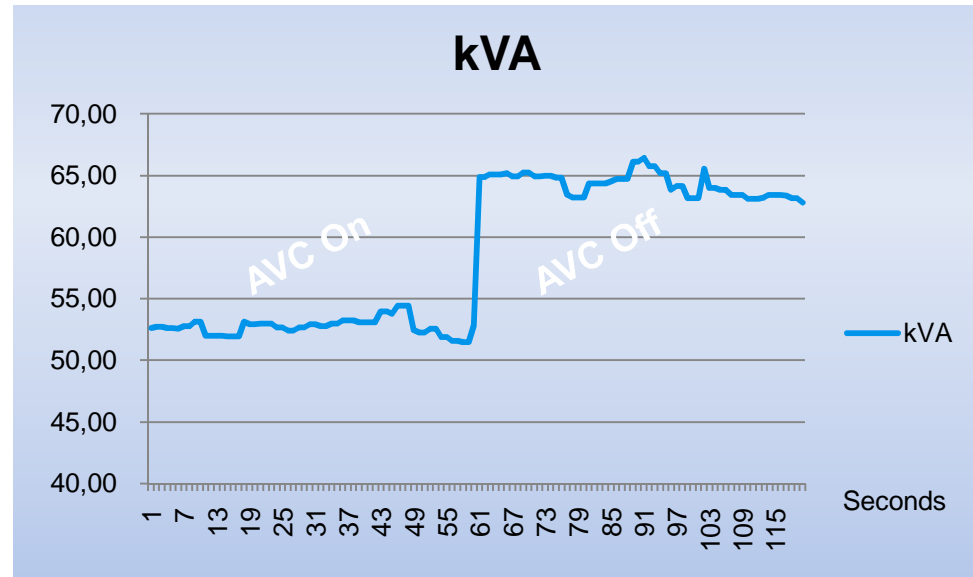
AVC turned off

# PCS100 AVC

- „Danish railways - DSB“

Voltage reduction from 234V to 207V

kVA is reduced by 18%

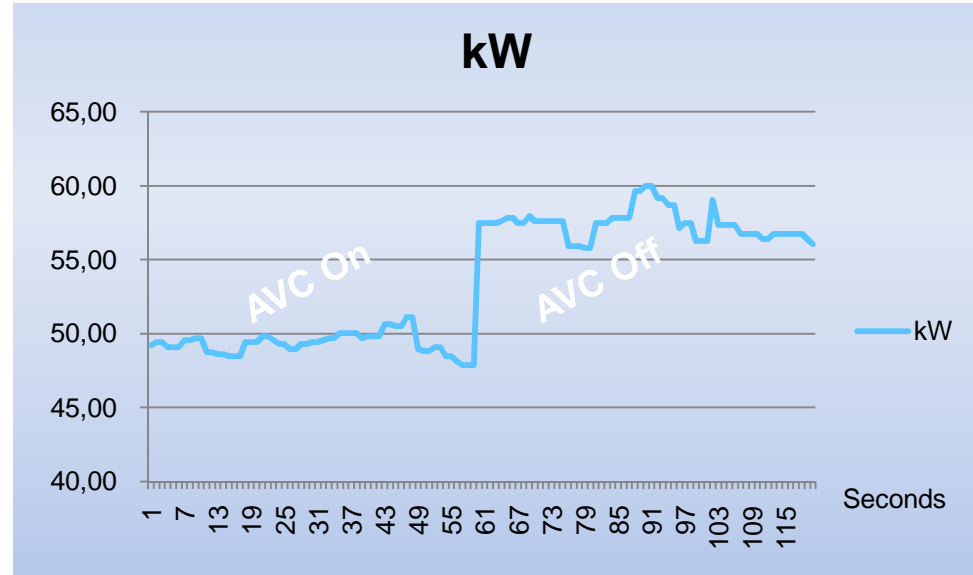


# PCS100 AVC

- „Danish railways - DSB“

Voltage reduction from 234V to 207V

kW is reduced by 14%

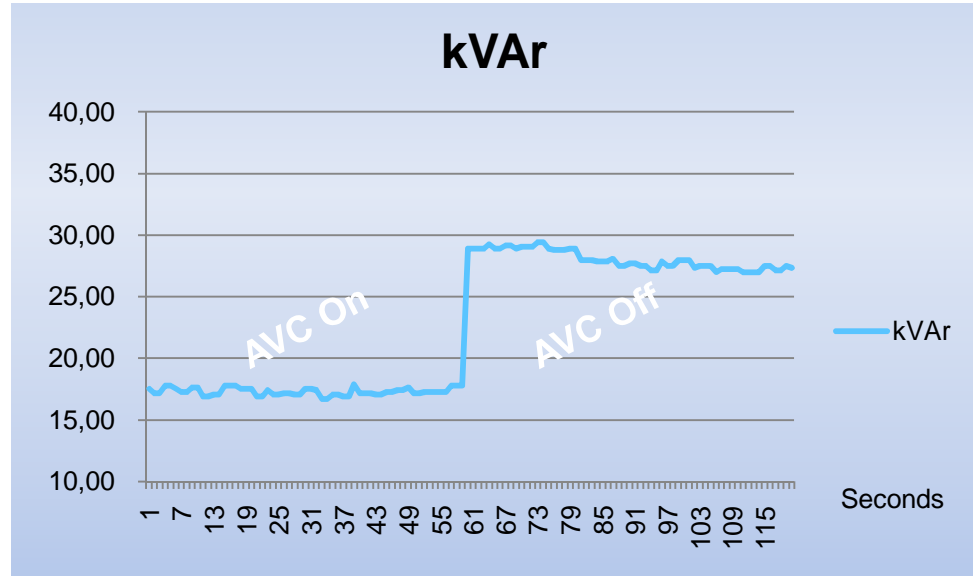


# PCS100 AVC

- „Danish railways - DSB“

Voltage reduction from 234V to 207V

kVAr is reduced by 37%



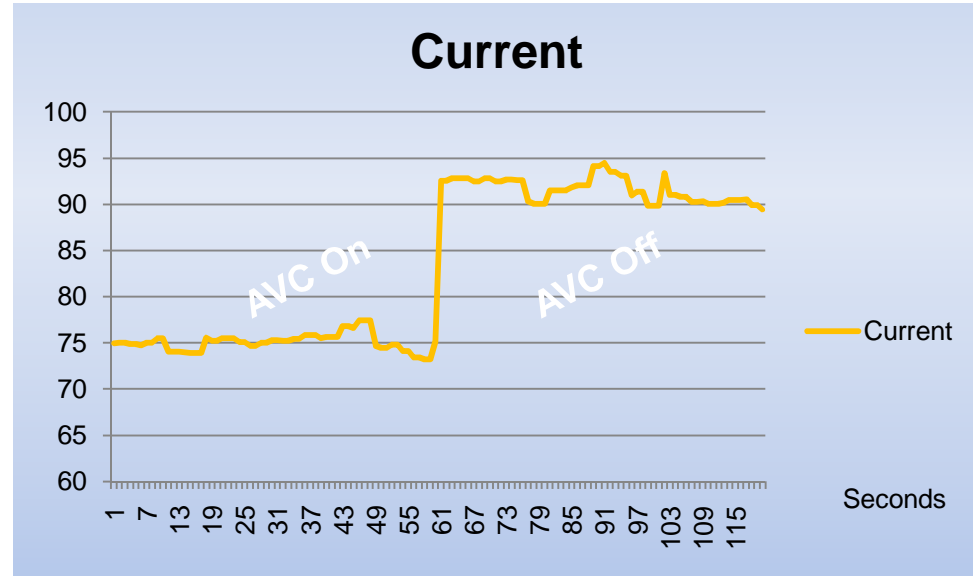


# PCS100 AVC

- „Danish railways - DSB“

Voltage reduction from 234V to 207V

Current is reduced by 18%

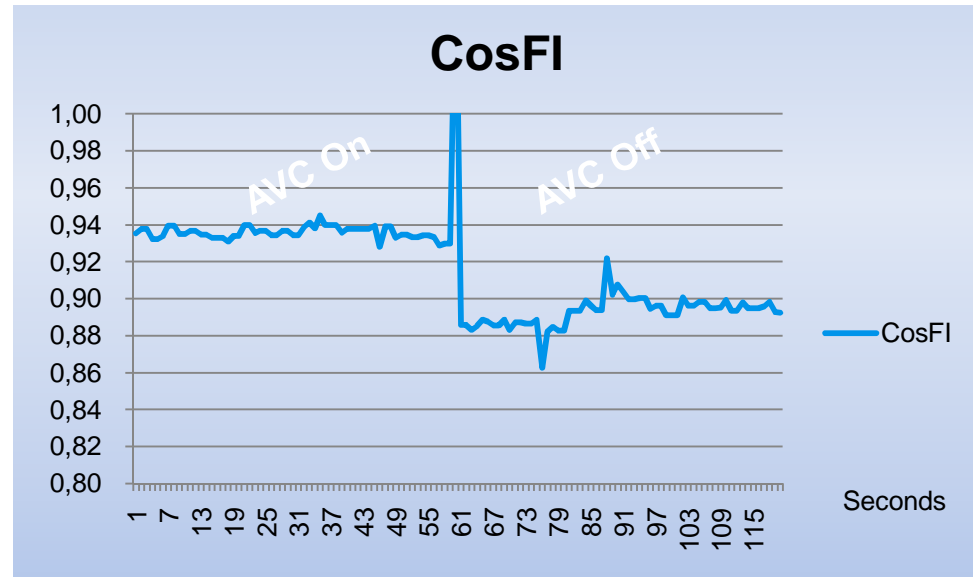


# PCS100 AVC

- „Danish railways - DSB“

Voltage reduction from 234V to 207V

CosFI is improved



Power and productivity  
for a better world™

