

## Adjustable Microwave Sensor LED Ceiling Lamp

### Technical Specification

#### Rev 1.0

### 1) Product Features



- Auto switch on/off and dimming.
- Built-in microwave sensor and light sensor.
- Parameters can be easily configured per dip switches
- Integration & easy installation.
- 3-year warranty, RoHS and CE.

### 2) Basic Parameters

Model No.	UE-SL-10-1001	UE-SL-10-1302	UE-SL-10-1603
Rated Input	100-240Vac, 50/60Hz		
Input Power	10W	13W	16W
Power Factor	≥ 0.9	≥ 0.9	≥ 0.9
Total Lumens	720LM	900LM	1040LM
CRI	≥80		
Optional CCT	3000K/ 4300K /6000K		
Leds	144PCS SMD 3528	180PCS SMD 3528	216PCS SMD 3528
Size(Φ*H)	185mm*62mm	238mm*62mm	298mm*62mm
Material	PMMA cover+ metal chassis		
Protection Grade	IP20		
Electrical Insulation Grade	Class I		
Transmission power	<1mW (2% of cell phone standby power.)		
HF System	5.8GHz ISM wave band		
Motion Detection Range	0.5~3m/s(Based on installaion height is 2.5~3m)		
Dimming Level	20%LM		
Working Temp	-10℃~40℃		
Storage Temp	-20℃~60℃		
Working Humidity	20%~85%		
Approval	CE		

### 3) Adjustable Parameters

Parameters can be configured per dip switches (see pic 1).

#### Detection area<sup>1</sup>

I – 0.8m, II – 4m, III – 6m, IV – 8m.

#### Hold time<sup>2</sup>

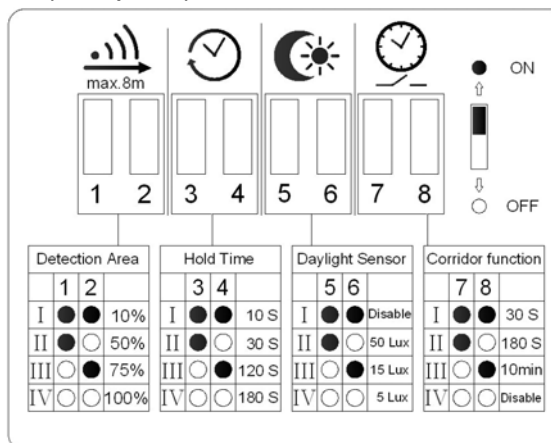
I – 10s, II – 30s, III – 120s, IV – 180s.

#### Daytime sensor

I – Disable<sup>3</sup>, II – 50lux, III – 15lux, IV – 5lux.

#### Corridor function (Wait time)

I – 30s, II – 180s, III – 10min, IV – Disable<sup>4</sup>



Pic 1 Dip switches

Note: 1, Detection area means detection radii. Lamp only can detect movement of object bigger than 0.3m<sup>3</sup>. Detection area is related to height and weight of object.  
2, Hold time means the time period lamp lights on 100%lm.  
3, Daytime sensor disable means that the lamp can not detect ambient brightness and will lights up once movement is detected even if in day time.  
4, Wait time means the time period lamp lights on at 20%lm. Corridor function disable means no time limitation, lamp will keep on at 20%lm if no movement.

#### 4) Work mode

##### Initialization

After connecting to mains and power on, lamp will light up 50%lm for 10sec and then switch off. This is called 'Initialization Mode'.

After initialization, if no motion in detection area, lamp will keep off. If any motion in detection area, it will work intelligently as description in normal mode.

##### Normal mode



A) Ambient illumination is larger than setting value of daytime sensor. Lamp keeps off even if there is movement in detection area (See note 3).

B) Ambient illumination is below setting value of daytime sensor and movement is detected in detection area, lamp auto lights up 100%lm.

C) No movement is detected beyond the hold time, lamp will dim to 20%lm and to wait a time.

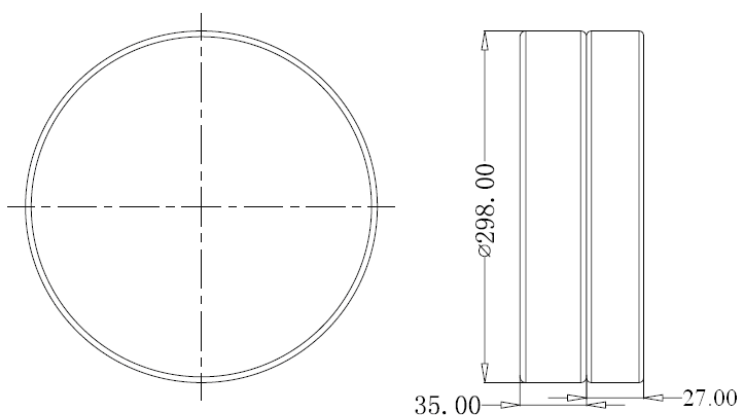
D) If any movement can be detected in wait time, lamp comes back to 100%lm again. If no movement beyond wait time, lamp auto turns off or keep on 20%lm (See note 4).

#### 5) Application

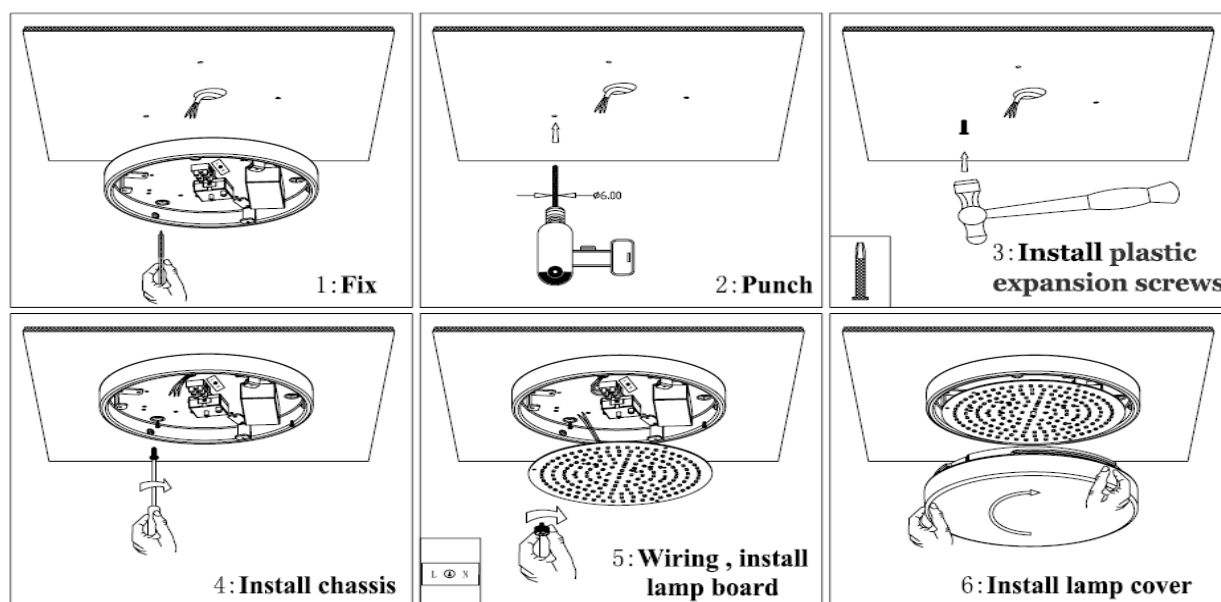
Normally used in corridor, kitchen, veranda, stair well, basement, garage etc.

#### 6) Product Diagram

Product Dimension: (unit:mm)



## 7) Installation



### Note

- A) To avoid interference each other, space between each lamps must larger than 1m.
- B) Microwave can't go through metal, and can't go through brick wall if thickness larger than 20cm. It can go through thin wall, but will be attenuated.
- C) Installation behind a glass/ plastic will result in reduction of detection area. Approximately reduce by 20% with every 3mm thickness.
- D) It is not recommended to install lamp in a small area smaller than 10m<sup>2</sup>.