



Upgraders Energi
Spar på energien - ikke lyset

Space Player

LIGHTING AND LASER
PROJECTION



**Combine lighting and laser projection.
Redefine space design.
Create new possibilities.**

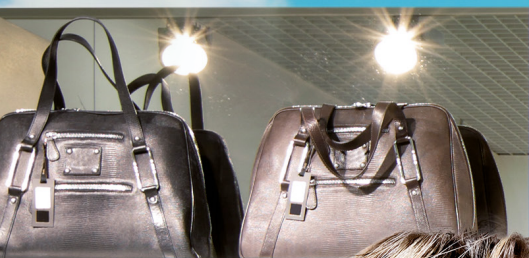


Space Player

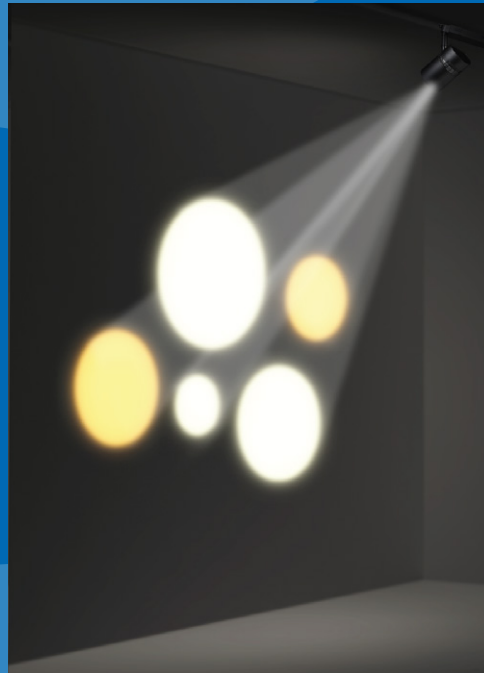
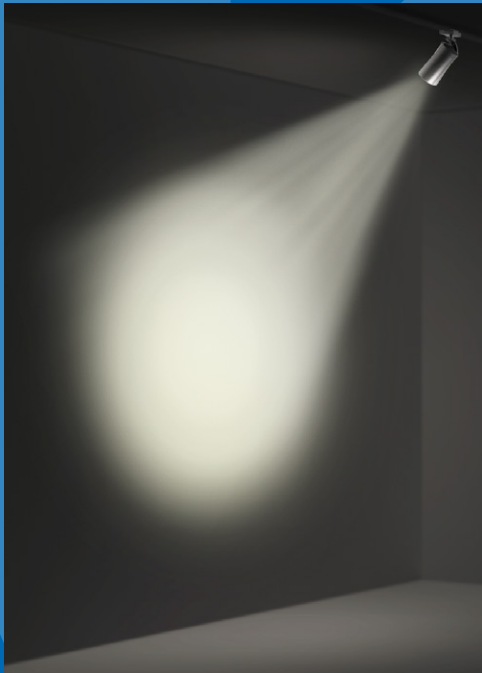
LIGHTING AND LASER PROJECTION

Turn your creative ideas into reality through expressive lighting and animation.

Combine illumination and projection to show any space in a completely new light.

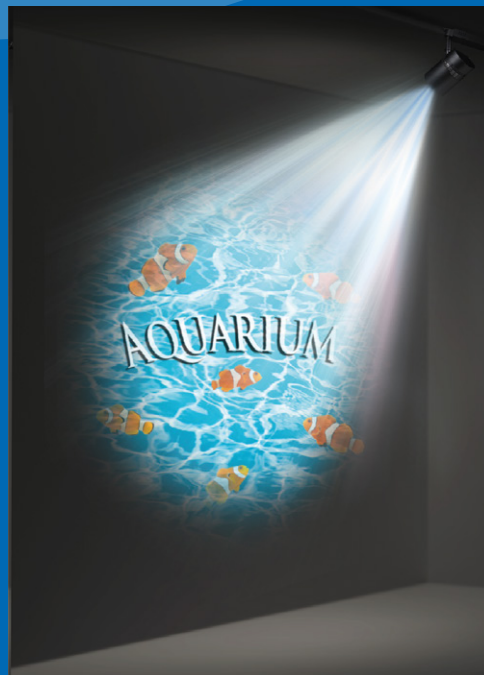


Complete flexibility



Weekend

Shirt	¥ 18,000
Bag	¥ 54,000
Belt	¥ 15,000
Skirt	¥ 22,000
Shoes	¥ 28,000



Until now, lighting has simply involved illuminating objects on display. But with the Space Player, you can customise the shape and colour of light. Spotlight merchandise and project product-specific information for more engaging and appealing displays. You can even play video or project and animate logos in brightly lit rooms.

Enhance restaurants



Turn simple meals into special dining experiences.

Project the menu onto walls or tables, accentuating colours to make the culinary experience even more appetising.



Surprise your guests with visual highlights, turning a visit into an unforgettable event.

Ambience-enhancing highlights can transform an evening meal into an exclusive dinner, leaving your guests not just satisfied, but delighted.

Thanks to the Space Player, you can create any number of lighting designs to produce a welcoming, engaging ambience.

Enhance museums



Breathe life into art exhibits.

You can use the Space Player to project short biographies of artists and descriptions of their work – and show the exhibit in its best-possible form.



Display art in a completely new light.

With the help of shapes and colours, the Space Player allows you to add unusual, captivating effects and elements to your exhibits.

As well as projecting information about the work of art, you can create a deeper understanding of the piece and capture attention to enhance the visitor experience.

Enhance shops



Turn heads with fresh ideas and effects for your product presentations.

Showcase the latest fashion against a backdrop that changes with the time of year.



Indoors, outdoors, as the seasons change...
Make the best possible impression on your customers and give fashion the 'wow' factor with the help of Space Player projections.

By projecting eye-catching backdrops and displaying colours to maximum effect, the Space Player creates exciting window-shopping experiences, day or night.

Product Features

Spotlight shaped design

Ideal for environments in which design is key.

The device is available in two colours: white or black.

Easy installation

Easy to install and re-install in different locations using standard lighting rails.

Laser projection

The use of laser light source means 20 000 hours of maintenance free operation.

Flexible projection

The Space Player can project in all directions below its horizontal axis.

Compatible with standard players

The Space Player is compatible with following image input: SD card, HDMI, wireless LAN*

* Videos cannot be played via wireless LAN.



FAQ (Frequently Asked Questions)

Q: Can the device be installed on existing busbars?

A: Yes, on commonly available busbars. Caution! The device must not be used with dimmers or light control systems.

Q: Does the device include an audio output function?

A: The main device does not feature integrated speakers, but does have an audio output jack. Audio output can be added by connecting the device to an external audio system.

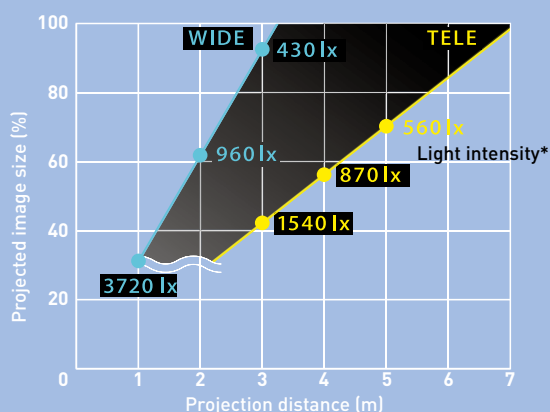
Q: Which SD card file formats are supported?

A: The following file formats are supported:
Image files: jpg, bmp. Videos: mov, avi, mp4, mpg, wmv.

Q: How do projected image size, projection distance and light intensity relate to one another?

A: As a general rule, light intensity will approach 1,000 lx* given a 2m projection distance and a maximum image size of 60%.

* Details are shown in the following charts.



* Light intensity values are based on the device's 'dynamic' image mode using only white light.

Projected image size			Projection distance	
%	Height	Width	Minimum	Maximum
30	0.404	0.646	0.95	2.10
40	0.538	0.862	1.28	2.81
50	0.673	1.077	1.61	3.52
60	0.808	1.292	1.94	4.23
70	0.942	1.508	2.27	4.94
80	1.077	1.723	2.60	5.65
90	1.212	1.939	2.93	6.36
100	1.346	2.154	3.26	7.07

(Unit of measurement: m)

The values specified above can change if a keystone correction is carried out. An image that has been corrected in this way can be smaller than the original size of the image.

Space Player

LIGHTING PROJECTION



PT-JW130GBE (Black)



PT-JW130GWE (White)

Specifications:

- Device material: plastic (high-gloss, matt white/matt black)
- Optical output: 1,000 lm (ANSI)
- Main voltage: 100–240 V AC (1.4–0.6 A), 50/60 Hz
- Output: 125 W
- Weight: 3.2 kg
- Light source: laser diode
- Operating lifetime: 20,000 hours
(as long as 50% of the original brightness are maintained.)
- Wireless remote control is included in the scope of delivery.
- Projection system: DLP® 1 x Chip, DLP® Method
- No. of pixels: 1,039,680 pixels (WXGA)
- Recommended image resolution: 1,280 x 800 pixels
- Lens: power zoom (1– 2.2 x), power focus
- Projection ratio: 1.5 – 3.3:1
- Keystone correction: horizontal/vertical 4-point correction
(corresponds to a $\pm 40^\circ$ angle)
- Connectors:
 - HDMI IN: 1 x 19-pin HDMI (HDCP-compatible)
 - 1 x LAN: RJ-45 for network connection, 100Base-TX, 10Base-T, PJLink™-compatible [Class1]
 - AUDIO OUT: M3 stereo mini jack
 - DC OUT: 1 x USB port (Type A), for voltage supply (5 V DC, max. 900 mA)
- Card slot: 1 x SD card slot
(SDHC card with 32 GB storage capacity)
- WLAN: IEEE802.11a/b/g/n
- Compatible with Miracast wireless transmission technology

IMPORTANT: As a Class 2 laser product, the device fully complies with all provisions of the JIS C6802:2011 safety standard.
Never look straight at or into the lens when the device is in operation.

DLP is a registered trademark of Texas Instruments Incorporated.

HDMI and High-Definition Multimedia Interface are trademarks or registered trademarks of HDMI Licensing LLC.

All product images and application examples in this catalogue are provided solely for illustrative purposes.



Upgraders Energi
www.energireduktion.dk - kontakt@energireduktion.dk - Tlf.: +45 7023 1939